

Supplies

MultiPurpose Sampler

MPS robotic smart series

MPS robotic

MPS robotic^{pro}

MPS liquid





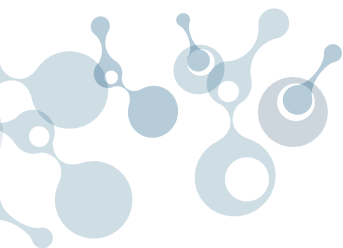
MultiPurpose Sampler MPS

The MPS robotic is a highly efficient GC/MS autosampler with extended robotic functionality. The MPS robotic provides reliable and efficient processing of complex tasks. Syringes are mounted in individual syringe modules, which can be exchanged automatically within a running sequence when using the MPS roboticpro for maximum flexibility.

This Supplies catalogue provides a list of certified consumables, accessories and spare parts essential for the smooth operation of your GERSTEL® MPS robotic. You have the right to demand the highest quality performance from GERSTEL systems and we have compiled this list so that this performance can be maintained throughout the life of your system. Please use only consumables, accessories and spare parts provided by GERSTEL. All GERSTEL products are made to exact specifications. Use of products not approved by GERSTEL can cause system malfunction or damage and may void system warranty.

If you have any questions please do not hesitate to contact GERSTEL. Typically, the most efficient way is to contact your local sales representative.





Content

MPS robotic tools	6
GERSTEL smart Syringes	8
GERSTEL smart syringes, liquid injection	8-10
GERSTEL smart Microliter, syringes, liquid injection	11
GERSTEL smart syringes, HS-syringes	11
GERSTEL smart syringes for PSM-Modul	11
Smart-SPME	12
Smart-SPME fiber	12
Smart-SPME arrow	13
GERSTEL Syringes	15
GERSTEL TriStar syringes, liquid injection	16-18
GERSTEL Microliter syringes, liquid injection	19
GERSTEL TriStar HS syringes	19
GERSTEL-TriStar for PSM Modul	19
SPME fibers	20
SPME fiber kits	20
SPME Stableflex fiber kits	21
SPME Stableflex fiber kits	21
Vials and Caps	22
Crimp Cap vials	22 - 23
Crimp Caps	22 - 23
Screw neck vials	24 - 25
Screw caps	24 - 25
Sample loops	26 - 27



GERSTEL smart syringes & smart SPME fibers

Smart syringes & SPME fibers for safe and efficient analysis!

GERSTEL smart syringes and smart SPME fibers enable safe and efficient analysis for both complex sample preparations and the processing of large sample series. They combine high quality and precision with intelligent functions to meet the requirements of modern analysis laboratories:

- **Error-free use**
through "plug and play" and automated setting of properties
- **Complete traceability**
through a readable and writable chip and a unique ID
- **Greater reliability of results**
through predefined ranges of method parameters and logging of use

The GERSTEL smart syringes and smart SPME fibers are compatible with the GERSTEL MPS smart series and the GERSTEL MPS robotic/roboticpro1 systems. GERSTEL smart syringes are available in all common sizes and SPME fibers can be purchased with all common phase materials and combinations.

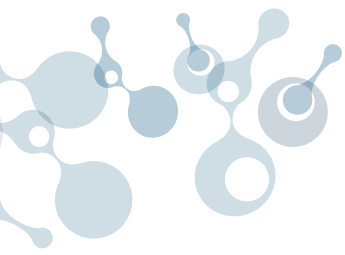
GERSTEL Smart Syringes

The GERSTEL Smart Syringes simplify your laboratory work and increase the reliability of your analyses.

- **Automatic detection & configuration**
by the GERSTEL MPS with setting of all relevant parameters
- **Real-time status overview**
of the parameters of the installed syringe in the GERSTEL Maestro software for optimal control
- **Easy syringe identification**
through color coding of the smart syringes
- **Interchangeable syringe needles**
for efficient operating costs with consistent quality

These functions ensure efficient, error-free and precise sample handling in your laboratory - even in complex sample preparation workflows.





SPME fibres

The smart SPME fibres offer innovative features that optimize your solid phase microextraction and increase the efficiency of your analyses.

- **Easier installation**
thanks to a new holder design
- **Automatic fiber type recognition**
for error-free configuration and method creation
- **Real-time status overview**
of the parameters of the installed SPME fiber (e.g. number of desorption cycles)
in the GERSTEL Maestro software for optimal control
- **Fast visual identification**
of fiber type and thickness using color coding

This allows you to perform your sample extraction and analysis in a time-saving, precise and reliable manner.





MPS robotic/robotic^{pro} tools



GERSTEL Universal Syringe Module USM

The GERSTEL USM is a universal syringe module for liquid syringes ranging from 1 to 1,000 μ L total volume. Given the extended volume range, most application requirements can be met without changing syringe modules, saving both time and money – and reducing the risk of error. The USM is compatible with the GERSTEL Gripper enabling automated performance of multiple sample preparation techniques. As an example, GC liners can be replaced automatically at a user defined frequency, using Automated Liner Exchange (ALEX). A further example is the automated thermal desorption of adsorbent tubes, solid samples such as polymers, or GERSTEL Twisters in the Thermal Desorption Unit (TDU).

■ robotic/robotic^{pro}

100100-101-00



GERSTEL Prep Syringe Module PSM

The GERSTEL Prep Syringe Module (PSM) is used for large volume syringes with a total volume of 1 mL or more. The PSM is used for automated sample preparation and is compatible with the GERSTEL Gripper enabling automated Solid Phase Extraction (SPE), Filtration of samples, or Elution of DNPH cartridges.

■ robotic/robotic^{pro}

100100-105-00



GERSTEL gripper for MPS Robotic/robotic^{pro}

Gripper for the following options:
GERSTEL-AutomatedLinerEXchange ALEX,
GERSTEL-AutomatedTDU-LinerEXchange ATEX and
GERSTEL-Dynamic Headspace DHS

■ robotic/robotic^{pro}

019597-003-00



Smart SPME fiber kit

consisting of:

SPME Tool

Smart SPME Fiber Assortment Kit (100100-543-00)

SPME Performance Evaluation Mix

■ robotic/robotic^{PRO}

100100-339-00



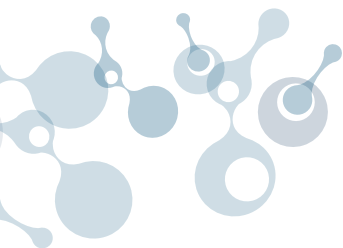


GERSTEL smart syringes for liquid injection



For GERSTEL Universal Syringe Modul (100100-101-00) in combination with MPS robotic and MPS robotic^{PRO}, and for MPS liquid.

with replaceable needle	volume μL	gastight	needle OD/ID/L/Tip [mm]	unit	Part No.
	5		0.47/0.11/65/C	1	100111-311-00
	5		0.63/0.11/65/C	1	100111-312-00
	10	■	0.47/0.11/65/C	1	100111-316-00
	10	■	0.63/0.11/65/C	1	100111-318-00
	10	■	0.72/0.17/65/LC	1	100111-319-00
	25	■	0.63/0.11/65/C	1	100111-300-00
	25	■	0.72/0.17/65/LC	1	100111-301-00
	50	■	0.63/0.11/65/C	1	100111-302-00
	50	■	0.72/0.17/65/LC	1	100111-303-00
	100	■	0.63/0.11/65/C	1	100111-304-00
	100	■	0.72/0.17/65/LC	1	100111-305-00
	250	■	0.63/0.32/65/C	1	100111-320-00
	250	■	0.72/0.17/65/LC	1	100111-321-00
	500	■	0.63/0.32/65/C	1	100111-322-00
	500	■	0.72/0.17/65/LC	1	100111-323-00
	1000	■	0.63/0.32/65/C	1	100111-324-00
	1000	■	0.72/0.37/65/LC	1	100111-325-00
replacement needle					
	5		0.47/0.11/65/C	2	100111-502-00
	5		0.63/0.11/65/C	2	100111-503-00
	10	■	0.47/0.11/65/C	2	100111-504-00
	10	■	0.63/0.11/65/C	2	100111-505-00
	10	■	0.72/0.17/65/LC	2	100111-506-00
	25 - 100	■	0.63/0.11/65/C	2	100111-500-00
	25 - 100	■	0.72/0.17/65/LC	2	100111-501-00
	250 - 500	■	0.63/0.32/65/C	2	100111-507-00
	250 - 500	■	0.72/0.17/65/LC	2	100111-508-00
	1000	■	0.63/0.32/65/C	2	100111-509-00
	1000	■	0.72/0.37/65/LC	2	100111-510-00



GERSTEL smart syringes for liquid injection

For GERSTEL Universal Syringe Modul (100100-101-00) in combination with MPS robotic and MPS robotic^{PRO}, and for MPS liquid.

	volume μL	gastight	needle OD/ID/L/Tip [mm]	unit	Part No.
needle in needle	1		0.47/0.15/65/C	1	100111-308-00
needle in needle	1		0.63/0.15/65/C	1	100111-306-00



with fixed needle	volume μL	gastight	needle OD/ID/L/Tip [mm]	unit	Part No.
	5		0.63/0.11/65/C	1	100111-310-00
	10		0.47/0.11/65/C	1	100111-313-00
	10		0.63/0.11/65/C	1	100111-314-00
	10	■	0.47/0.11/65/C	1	100111-315-00
	10	■	0.63/0.11/65/C	1	100111-317-00





GERSTEL smart syringes for liquid injection

For MPS robotic tool D8/85

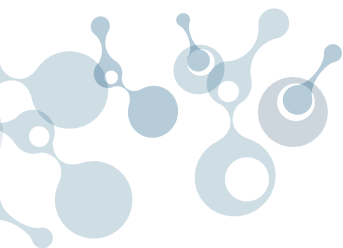


with replaceable needle	volume µL	gastight	needle OD/ID/L/Tip [mm]	unit	Part No.
	5		0.63/0.11/85/C	1	100108-309-00
	10	■	0.63/0.11/85/C	1	100108-310-00
	25	■	0.63/0.11/85/C	1	100108-300-00
	50	■	0.63/0.11/85/C	1	100108-301-00
	100	■	0.63/0.11/85/C	1	100108-302-00
	250	■	0.63/0.32/85/C	1	100108-303-00
	250	■	0.72/0.37/35/LC	1	100108-304-00
	500	■	0.63/0.32/85/C	1	100108-305-00
	500	■	0.72/0.37/85/LC	1	100108-306-00
	1000	■	0.63/0.32/85/C	1	100108-307-00
	1000	■	0.72/0.37/85/LC	1	100108-308-00
replacement needle					
	5		0.47/0.11/85/C	2	100108-510-00
	5		0.63/0.11/85/C	2	100108-509-00
	10	■	0.47/0.11/85/C	2	100111-512-00
	10	■	0.63/0.11/85/C	2	100108-511-00
	25 - 100	■	0.63/0.11/85/C	2	100108-500-00
	250 - 500	■	0.63/0.32/85/C	2	100108-503-00
	250 - 500	■	0.72/0.37/85/LC	2	100108-504-00
	1000	■	0.63/0.32/85/C	2	100108-507-00
	1000	■	0.72/0.37/85/LC	2	100108-508-00



For MPS robotic tool D18/57

with replaceable needle	volume µL	gastight	needle OD/ID/L/Tip [mm]	unit	Part No.
	10000	■	0.72/0.37/57/LC	1	100109-300-00
	10000	■	1.07/0.65/57/LC	1	100109-301-00
replacement needle					
	10000	■	0.63/0.32/57/C	2	100109-500-00
	10000	■	0.72/0.37/57/LC	2	100109-501-00
	10000	■	1.07/0.65/57/LC	2	100108-502-00



GERSTEL-Smart mikrolitermSpritze for liquid injection

For MPS robotic tool D7/57

with fixed needle	volume μL	gastight	needle OD/ID/L/Tip [mm]	unit	Part No.
	5		0.63/0.11/57/C	1	100104-301-00
	10		0.63/0.11/57/C	1	100104-210-00
	10	■	0.63/0.11/57/C	1	100104-200-00
	100	■	0.63/0.11/57/C	1	100104-203-00

GERSTEL smart spritze for Headspace injection

For MPS robotic Headspace tool HS 1000; HS 2500

with replaceable needle	volume μL	gastight	needle OD/ID/L/Tip [mm]	unit	Part No.
for HS tool HS 1000	1000	■	0.63/0.32/65/H	1	100106-300-00
for HS tool HS 2500	2500	■	0.63/0.32/65/H	1	100106-301-00
for HS tool HS 5000	5000	■	0.63/0.32/65/H	1	100106-302-00
replacement needle	1000 - 5000	■	0.63/0.32/65/H	2	100106-500-00

for MPS robotic SPE/DPX/Prep syringe module

with replaceable needle	volume μL	gastight	needle OD/ID/L/Tip [mm]	unit	Part No.
	1000	■	0.63/0.32/65/C	1	100112-300-00
	2500	■	0.63/0.32/65/C	1	100112-301-00
PFAS free	2500	■	0.63/0.32/65/C	1	100112-302-00
	5000	■	0.63/0.32/65/C	1	100112-308-00
replacement needle	1000 - 5000	■	0.63/0.32/65/C	2	100112-502-00
	1000 - 5000	■	0.72/0.37/65/LC	2	100112-501-00





Smart SPME fiber

1 package (1 units)

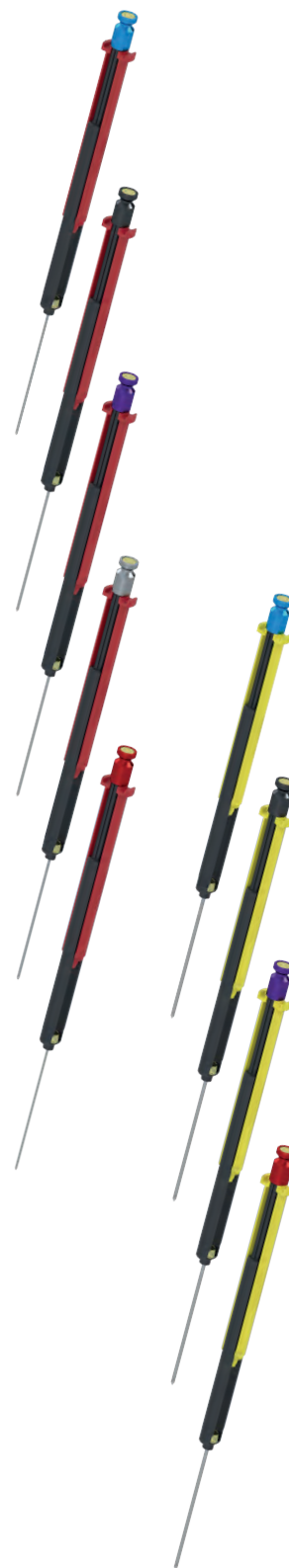
DVB/C-WR/PDMS (Divinylbenzene / Carbon Wide Range / Polydimethylsiloxane) Fiber thickness 50/30µm; Fiber length 10mm; color code: dark gray	100100-479-00
A-85/10-P1 (Acrylate (Polyacrylate)) Fiber thickness 85µm; Fiber length 10mm; color code: gray	100100-523-00
C-WR/PDMS (Carbon Wide Range / Polydimethylsiloxane) Fiber thickness 95µm; Fiber length 10mm; color code: dunkelblau	100100-526-00
DVB/PDMS (Divinylbenzene / Polydimethylsiloxane) Fiber thickness 65µm; Fiber length 10mm; color code: violett	100100-529-00
PDMS (Polydimethylsiloxane) Fiber thickness 100µm; Fiber length 10mm; color code: rot	100100-532-00
PDMS (Polydimethylsiloxane) Fiber thickness 30µm; Fiber length 10mm; color code: golden	100100-535-00
PDMS (Polydimethylsiloxane) Fiber thickness 7µm; Fiber length 10mm; color code: grün	100100-538-00



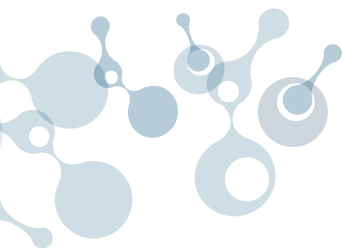
Smart SPME arrow

1 package (1 units)

C-WR/PDMS (Carbon Wide Range / Polydimethylsiloxane) Fiber thickness 120µm; Fiber length 20mm; color code: hellblau	100100-487-00
DVB/C-WR/PDMS (Divinylbenzene / Carbon Wide Range / Polydimethylsiloxane) Fiber thickness 120µm; Fiber length 20mm; color code: dunkel grau	100100-490-00
DVB/PDMS (Divinylbenzene) Fiber thickness 120µm; Fiber length 20mm; color code: violett	100100-493-00
A-100/20-P1 Acrylate (Polyacrylate) Fiber thickness 100µm; Fiber length 20mm; color code: grau	100100-496-00
PDMS (Polydimethylsiloxane) Fiber thickness 100µm; Fiber length 20mm; color code: rot	100100-499-00
C-WR / PDMS - wide sleeve (Carbon Wide Range / Polydimethylsiloxane) Fiber thickness 120µm; Fiber length 20mm; color hell blau	100100-502-00
DVB/C-WR/PDMS - wide sleeve (Divinylbenzene / Carbon Wide Range / Polydimethylsiloxane) Fiber thickness 120µm; Fiber length 20mm; color code: dunkelgrau	100100-505-00
DVB/PDMS - wide sleeve (Divinylbenzene) Fiber thickness 120µm; Fiber length 20mm; color code: violett	100100-508-00
PDMS - wide sleeve (Polydimethylsiloxane) Fiber thickness 100µm; Fiber length 20mm; color code: rot	100100-511-00







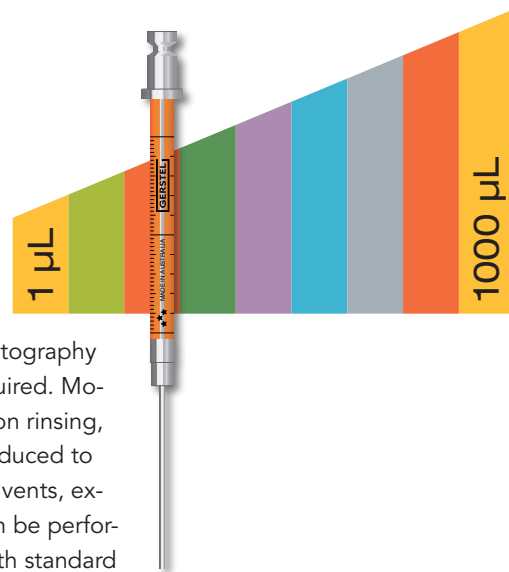
GERSTEL TriStar Syringes

Autosampler Syringes for the MPS family

You need an excellent autosampler syringe in order to perform complex sample preparation methods and reliably inject large series of samples to a chromatography system. Lowest possible sample to sample carry-over and highest accuracy are required. Modern mass spectrometers detect every trace contamination placing high demands on rinsing, solvent quality and syringe quality. GERSTEL TriStar Syringes are designed and produced to meet these demands. The rugged and inert materials used provide resilience to solvents, expanded temperature range and long life expectancy. The number of cycles that can be performed with TriStar syringes has been expanded by a factor of up to ten compared with standard syringes.

The TriStar syringe series offers several improvements to minimize or eliminate sources for carry-over, such as reduced residual volumes and active sites inside the syringe.

The sample is kept clean and uncontaminated, and the needle remains solidly mounted without the risk of solvent attacking the glue. GERSTEL TriStar Syringes for the GERSTEL MPS family are available in all standard sizes.



Benefits of the GERSTEL TriStar Syringes

Color coded

- Easy selection of the correct syringe volume through clear and unambiguous color coding
- Reliable analysis, the risk of incorrect syringe selection is minimized

Inert, rugged material

- Reliable analysis performance with solvent-resistant surfaces
- Extended temperature range for increased ruggedness and application range
- Long life span with reliable operation

Optimized assembly

- Carry-over minimized through reduced residual volumes in the plunger assembly, improved surfaces and PTFE surface sealing
- Carry over and contamination reduced through improved syringe-to-needle connection, eliminating cavities and contact with glue.
- Active plunger tip provides improved Headspace syringe sealing and reduced temperature equilibration times resulting in improved flexibility and productivity

Compatibility:

- Previous versions plungers and needles can be used for TriStar syringes, but it is not recommended to use TriStar plungers and needles for previous version syringes.

Farbe	Spritzenvolumina	
Gelb	1 µL	1 mL
Hellgrün	5 µL	5 mL
Dunkelorange	10 µL	
Dunkelgrün	25 µL	
Violett	50 µL	
Blau	100 µL	
Grau	250 µL	2,5 mL
Hellorange	500 µL	

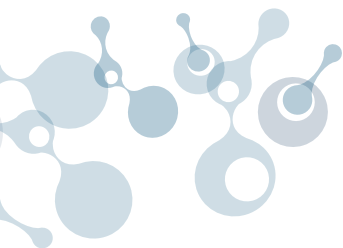


GERSTEL TriStar syringes for liquid injection

For GERSTEL Universal Syringe Modul (100100-101-00) in combination with MPS robotic and MPS robotic^{PRO}, and for MPS liquid.



with replaceable needle	volume μL	gastight	needle OD/ID/L/Tip [mm]	unit	Part No.
	5		0.47/0.11/65/C	1	100111-011-00
	5		0.63/0.11/65/C	1	100111-012-00
	10	■	0.47/0.11/65/C	1	100111-016-00
	10	■	0.63/0.11/65/C	1	100111-018-00
	10	■	0.72/0.17/65/LC	1	100111-019-00
	25	■	0.63/0.11/65/C	1	100111-000-00
	25	■	0.72/0.17/65/LC	1	100111-001-00
	50	■	0.63/0.11/65/C	1	100111-002-00
	50	■	0.72/0.17/65/LC	1	100111-003-00
	100	■	0.63/0.11/65/C	1	100111-004-00
	100	■	0.72/0.17/65/LC	1	100111-005-00
	250	■	0.63/0.32/65/C	1	100111-020-00
	250	■	0.72/0.17/65/LC	1	100111-021-00
	500	■	0.63/0.32/65/C	1	100111-022-00
	500	■	0.72/0.17/65/LC	1	100111-023-00
	1000	■	0.63/0.32/65/C	1	100111-024-00
	1000	■	0.72/0.37/65/LC	1	100111-025-00
replacement plunger					
	10	■		1	100111-800-00
	25	■		1	100111-801-00
	50	■		1	100111-802-00
	100	■		1	100111-803-00
	250	■		1	100111-804-00
	500	■		1	100111-805-00
	1000	■		1	100111-806-00
replacement needle					
	5		0.47/0.11/65/C	2	100111-502-00
	5		0.63/0.11/65/C	2	100111-503-00
	10	■	0.47/0.11/65/C	2	100111-504-00
	10	■	0.63/0.11/65/C	2	100111-505-00
	10	■	0.72/0.17/65/LC	2	100111-506-00
	25 - 100	■	0.63/0.11/65/C	2	100111-500-00
	25 - 100	■	0.72/0.17/65/LC	2	100111-501-00
	250 - 500	■	0.63/0.32/65/C	2	100111-507-00
	250 - 500	■	0.72/0.17/65/LC	2	100111-508-00
	1000	■	0.63/0.32/65/C	2	100111-509-00
	1000	■	0.72/0.37/65/LC	2	100111-510-00



GERSTEL TriStar syringes for liquid injection

For GERSTEL Universal Syringe Modul (100100-101-00) in combination with MPS robotic and MPS robotic^{PRO}, and for MPS liquid.

	volume μL	gastight	needle OD/ID/L/Tip [mm]	unit	Part No.
needle in needle	1		0.47/0.15/65/C	1	100111-008-00
needle in needle	1		0.63/0.15/65/C	1	100111-006-00
repair kit					
for syringe 100111-008-00	1		0.47/0.15/65/C	2	100111-551-00
for syringe 100111-006-00	1		0.63/0.15/65/C	2	100111-550-00

with fixed needle	volume μL	gastight	needle OD/ID/L/Tip [mm]	unit	Part No.
	5		0.47/0.11/65/C	1	100111-009-00
	5		0.63/0.11/65/C	1	100111-010-00
	10		0.47/0.11/65/C	1	100111-013-00
	10		0.63/0.11/65/C	1	100111-014-00
	10	■	0.47/0.11/65/C	1	100111-015-00
	10	■	0.63/0.11/65/C	1	100111-017-00
replacement plunger	10	■		1	100111-800-00





GERSTEL TriStar syringes for liquid injection

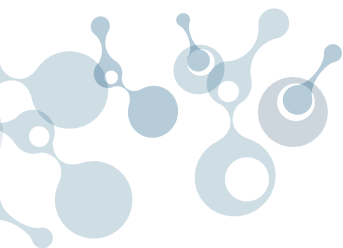
For MPS robotic tool D8/85

with replaceable needle	volume μL	gastight	needle OD/ID/L/Tip [mm]	unit	Part No.
	5		0.63/0.11/85/C	1	100108-009-00
	10	■	0.63/0.11/85/C	1	100108-010-00
	25	■	0.63/0.11/85/C	1	100108-000-00
	50	■	0.63/0.11/85/C	1	100108-001-00
	100	■	0.63/0.11/85/C	1	100108-002-00
	250	■	0.63/0.32/85/C	1	100108-003-00
	250	■	0.72/0.37/35/LC	1	100108-004-00
	500	■	0.63/0.32/85/C	1	100108-005-00
	500	■	0.72/0.37/85/LC	1	100108-006-00
	1000	■	0.63/0.32/85/C	1	100108-007-00
	1000	■	0.72/0.37/85/LC	1	100108-008-00
replacement plunger					
	10	■		1	100111-800-00
	25	■		1	100111-801-00
	50	■		1	100111-802-00
	100	■		1	100111-803-00
	250	■		1	100111-804-00
	500	■		1	100111-805-00
	1000	■		1	100111-806-00
replacement needle					
	5		0.47/0.11/85/C	2	100108-510-00
	5		0.63/0.11/85/C	2	100108-509-00
	10	■	0.47/0.11/85/C	2	100111-512-00
	10	■	0.63/0.11/85/C	2	100108-511-00
	25 - 100	■	0.63/0.11/85/C	2	100108-500-00
	250 - 500	■	0.63/0.32/85/C	2	100108-503-00
	250 - 500	■	0.72/0.37/85/LC	2	100108-504-00
	1000	■	0.63/0.32/85/C	2	100108-507-00
	1000	■	0.72/0.37/85/LC	2	100108-508-00

GERSTEL Mikroliter syringes for Headspace injection

For MPS robotic tool D7/57

with fixed needle	volume μL	gastight	needle OD/ID/L/Tip [mm]	unit	Part No.
	5		0.63/0.11/57/C	1	100104-001-00
	10		0.63/0.11/57/C	1	100104-010-00
	10	■	0.63/0.11/57/C	1	100104-100-00
	50	■	0.63/0.11/57/C	1	100104-102-00
	100	■	0.63/0.11/57/C	1	100104-101-00
replacement plunger					
	50	■		1	100104-802-00
	100	■		1	100104-803-00



GERSTEL TriStar syringes for liquid injection

For MPS robotic tool D18/57

with replaceable needle	volume μL	gastight	needle OD/ID/L/Tip [mm]	unit	Part No.
	10000		0.72/0.37/57/LC	1	100109-000-00
	10000		1.07/0.65/57/LC	1	100109-001-00
replacement plunger	10000	■		1	100109-800-00
replacement needle	10000	■	0.63/0.32/57/C	2	100109-500-00
	10000	■	0.72/0.37/57/LC	2	100109-501-00
	10000	■	1.07/0.65/57/LC	2	100109-502-00

GERSTEL TriStar HS syringe for Headspace injection

For MPS robotic Headspace tool HS 1000; HS 2500

with replaceable needle	volume μL	gastight	needle OD/ID/L/Tip [mm]	unit	Part No.
für HS tool HS 1000	1000	■	0.63/0.32/65/H	1	100106-000-00
für HS tool HS 2500	2500	■	0.63/0.32/65/H	1	100106-001-00
replacement plunger	1000	■		2	100106-800-00
	2500	■		2	100106-801-00
replacement needle	1000 - 2500	■	0.63/0.32/65/H	2	100106-500-00

GERSTEL TriStar syringe

for MPS robotic SPE/DPX/Prep syringe module

with replaceable needle	volume μL	gastight	needle OD/ID/L/Tip [mm]	unit	Part No.
	1000	■	0.63/0.32/65/C	1	100112-000-00
	2500	■	0.63/0.32/65/C	1	100112-001-00
replacement plunger	1000	■		1	100111-800-00
	2500	■		1	100111-801-00
replacement needle	1000 - 2500	■	0.63/0.32/65/C	2	100112-502-00
	1000 - 2500	■	0.72/0.37/65/LC	2	100112-501-00



SPME fiber

SPME fiber kits

1 package (3 units)

Fibers used for automated SPME analysis have no spring – in contrast to fibers for manual SPME. Consequently, there are separate holders for each fiber type. The fibers listed here are designed exclusively for automated SPME analysis using the MPS. They are not suitable for manual SPME analysis.

For use with the GERSTEL® Cooled Injection System, CIS

23 gauge (OD=0.63 mm) fibers and SPME liner are recommended.



gases and low molecular compounds		
● 75 µm carboxen/polydimethylsiloxane	23 gauge (OD = 0.63 mm)	093639-009-00
gases and low molecular compounds		
● 85 µm carboxen/polydimethylsiloxane, on StableFlex™ fiber	23 gauge (OD = 0.63 mm)	093639-024-00
volatiles and semivolatiles		
○ 85 µm polyacrylate		
● 100 µm polydimethylsiloxane		
● 7 µm polydimethylsiloxane coating	23 gauge (OD = 0.63 mm)	093639-028-00
volatile or polar organics in water		
● 75 µm Carboxen/Polydimethylsiloxan		
● 65 µm Polydimethylsiloxan/Divinylbenzol		
○ 85 µm Polyacrylat	23 gauge (OD = 0.63 mm)	093639-029-00
flavors and odors		
● 100 µm polydimethylsiloxane,		
● 65 µm polydimethylsiloxane/divinylbenzene,		
● 75 µm carboxen/polydimethylsiloxane	23 gauge (OD = 0.63 mm)	093639-030-00
flavors		
● 50/30 µm divinylbenzene/carboxen/polydimethylsiloxane on StableFlex fiber	23 gauge (OD = 0.63 mm)	093639-026-00
on 2 cm StableFlex fiber	23 gauge (OD = 0.63 mm)	093639-027-00
● 100 µm polydimethylsiloxane		
● 85 µm carboxen/polydimethylsiloxane		
● 50/30 µm DVB/carboxen/polydimethylsiloxane	23 gauge (OD = 0.63 mm)	093639-037-00



SPME fiber kits

for automated SPME using the MPS;
1 package (3 units)

volatiles

● 100 µm polydimethylsiloxane	23 gauge (OD = 0.63 mm)	093639-001-00
-------------------------------	-------------------------	---------------

non-polar semivolatiles

● 30 µm polydimethylsiloxane	23 gauge (OD = 0.63 mm)	093639-020-00
------------------------------	-------------------------	---------------

non-polar high molecular weight compounds

● 7 µm polydimethylsiloxane	23 gauge (OD = 0.63 mm)	093639-021-00
-----------------------------	-------------------------	---------------

volatiles, amines, and nitroaromatic compounds

● 65 µm polydimethylsiloxane/divinylbenzene, partially crosslinked	23 gauge (OD = 0.63 mm)	093639-005-00
--	-------------------------	---------------

volatiles, amines, and nitroaromatic compounds

● 65 µm polydimethylsiloxane/divinylbenzene, highly crosslinked on StableFlex fiber	23 gauge (OD = 0.63 mm)	093639-022-00
---	-------------------------	---------------

polar semivolatiles

○ 85 µm Polyacrylat	23 gauge (OD = 0.63 mm)	093639-023-00
---------------------	-------------------------	---------------

● 60 µm Carbowax-Polyethylene Glycol on metal fiber	23 gauge (OD = 0.63 mm)	093639-043-00
---	-------------------------	---------------

SPME Stableflex fiber kits

23 gauge (OD = 0.63 mm), 4 fibers

● 50/30 µm Divinylbenzene/Carboxen	23 gauge (OD = 0.63 mm)	093639-031-00
● 65 µm Polydimethylsiloxane/Divinylbenzene		
● 85 µm Carboxen/Polydimethylsiloxane		
○ 85 µm Polyacrylat		

SPME metal fiber kits

23 gauge (OD = 0.63 mm), 1 fiber

volatiles

● 100 µm polydimethylsiloxane, non-bonded	23 gauge (OD = 0.63 mm)	093639-033-00
---	-------------------------	---------------

non-polar semivolatiles

● 30 µm polydimethylsiloxan, non bonded	23 gauge (OD = 0.63 mm)	093639-034-00
---	-------------------------	---------------

non-polar high molecular weight compounds

● 7 µm polydimethylsiloxan, bonded	23 gauge (OD = 0.63 mm)	093639-035-00
------------------------------------	-------------------------	---------------

volatiles, amines, and nitroaromatic compounds

● 65 µm polydimethylsiloxane/divinylbenzene	23 gauge (OD = 0.63 mm)	093639-038-00
---	-------------------------	---------------

flavors

● 50/30 µm divinylbenzene/carboxen Polydimethylsiloxane	23 gauge (OD = 0.63 mm)	093639-040-00
---	-------------------------	---------------

fiber length 2 cm	23 gauge (OD = 0.63 mm)	093639-041-00
-------------------	-------------------------	---------------





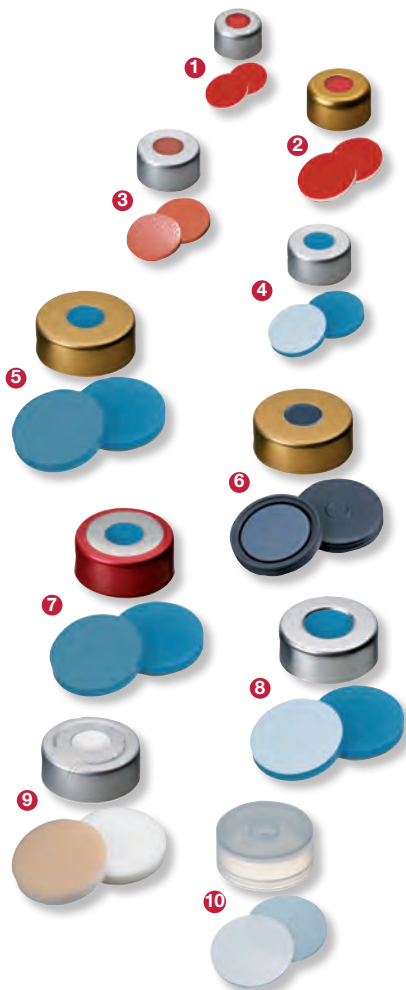
Sample vials and caps

Crimp cap vials

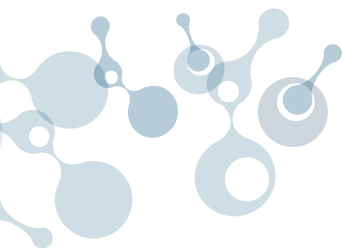
Type	mL	Seal size (mm)	unit	Part no.
clear	0.7	8	100	093640-052-00 1
clear	1.5	11	100	093640-004-00 2
clear	2.5	11	100	093640-074-00 3
clear	10	20	100	093640-005-00 4
clear	10	20	1000	093640-069-00 4
clear	20	20	100	093640-006-00 5
clear	20	20	1000	093640-068-00 5
clear	25	20	100	093640-073-00 6
clear	100	20	88	093640-062-00 6
Solvent bottle, includes cap & septum	100	20	1	093631-054-00 7

Crimp caps with septum for vials

If vials need to be reopened and emptied after analysis, magnetic vial caps with aluminum edges (Bi-metal) offer the best solution. The softer edges allow easy crimping and decrimping using a hand-crimper. If steel caps are used, it is recommended to use a bench-top crimper.



Type	for Seal size	unit	Part no.
Aluminum Septum: Silicone white/PTFE red	8	100	093640-053-00 1
Magnetic, golden Septum: Silicone red/PTFE red	11	100	093640-007-00 2
Aluminum Septum: natural rubber red-orange/ PTFE Transparent, 60° shore A	11	100	093640-089-00 3
Aluminum Septum: Silicone blue/PTFE white, 45° shore A	11	100	093640-090-00 4
Magnetic, golden, Septum: Silicone blue, PTFE white	20 20	100 1000	093640-008-00 5 093640-015-00 5
Magnetic, golden, Pharma-Fix-Septum: Butyl /PTFE white	20	100	093640-070-00 6
Bi-Metal, Magnetic, red, Septum: Silicone blue, PTFE white	20	100	093640-063-00 7
Aluminum, Septum: Silicone blue/PTFE white, 35° Shore A	20	100	093640-067-00 8
Aluminum, Septum: Silicone white, PTFE beige, 35° Shore A,	20	100	011912-002-00 9
PE Cap, transparent Septum: Silicone blue/PTFE white 45° Shore A,	20	10	093640-097-00 10



Vials for SPME

Type	mL	Seal size (mm)	unit	Part no.
Clear, with imprint »SPME« with extra thick crimp neck	20	20	100	093640-035-00

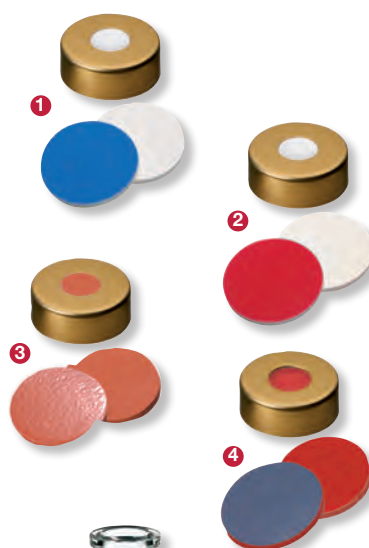


Crimp caps for SPME

Magnetic, golden, with septum

For SPME applications, crimp caps of steel with silicone septa are recommended. If the sample is analyzed for silicone, it is recommended to use butyl rubber septa or natural rubber septa. For a leak-free seal, it is recommended to use a bench-top crimper.

Type	for Seal size	unit	Part no.
Septum: Silicone white/PTFE blue, 1.5 mm, 60° Shore A, for SPME vial	20	100	093640-030-00 1
Septum: Silicone creme, PTFE red, 1.5 mm, 55° Shore A, for SPME vial	20	100	093640-031-00 2
Septum: Natural rubber, red-orange/PTFE, 1.3 mm, 60° Shore A, for SPME vial	20	100	093640-034-00 3
Septum: Butyl red / PTFE grey, 1.3 mm, 55° Shore A, for SPME vial	20	100	093640-050-00 4



Vials, inserts, and caps for HSSE Twister inserts

Type	mL	Seal size (mm)	unit	Part no.
Clear, with imprint »Twister«, with extra thick crimp neck	20	20	100	012491-000-00
Insert for Twister Vial 012491-000-00			100	012492-000-00
Aluminium Headspace Crimp cap, Septum: Silicone white/PTFE beige, 3.25mm, 35° shore A		20	100	011912-002-00



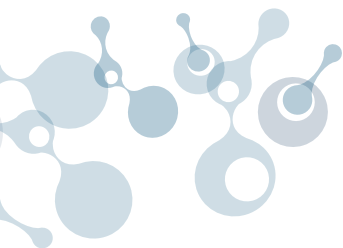


Screw cap vials

Vials	mL	Thread Ø	unit	Part no.	
Clear, Ø11.6 x 32 mm	1.1	9	100	093640-045-00	1
Clear, Ø11.6 x 32 mm	1.5	9	100	093640-046-00	2
Brown, green screw caps, Septum: PTFE/Silicone/PTFE	1.5	9	100	089355-084-00	3
Clear, blue screw caps, Septum: rubber red/PTFE	1.5	9	100	089355-085-00	4
Brown, Ø11.6 x 32 mm, short screw neck	1.5	9	100	093640-095-00	5
Clear, Ø15 x 45 mm HIGH RECOVERY VIAL	3.5	11	100	093640-098-00	6
Clear, Ø14.7 x 45 mm	4	11	100	093640-076-00	7
Clear	10	18	100	093640-038-00	8
Brown	10	18	100	093640-039-00	9
Clear	20	18	100	093640-036-00	10
Brown	20	18	100	093640-037-00	11
Clear, Ø27.5 x 95 mm	40	18	100	094210-000-00	12
Microliter inserts for 2 mL screw cap vials, clear	0.1		100	093640-029-00	13
For 10 mm Twisters: Insert Ø 6 x 31 mm, clear, flat bottom	0.2		100	093640-047-00	14

Screw caps with septa

	Thread Ø	unit	Part no.	
PP transparent, Septum: Silicone blue / PTFE white, 1.3 mm, 45° Shore A	9	100	093640-072-00	1
PP blue, Septum: Silicone white/PTFE red, 1.0 mm, 55° shore A	9	100	093640-075-00	2
UltraClean™, magnetic, golden Septum: Silicone white/PTFE red 1.0 mm	9	100	093640-079-00	3
PP black, Septum: Silicon blue/PTFE white, 1.3 mm 45° shore A	11	100	093640-081-00	4
PP black, Septum: Natural rubber red-orange/ TEF transparent, 1.3 mm	11	100	093640-077-00	5



Screw caps with septa

Magnetic metal based vial caps enable transport and automation using the GERSTEL MultiPurpose Sampler

	Thread Ø	unit	Part no.
Septum: Silicone blue / PTFE white, 1.3 mm, 45° Shore A	18	100	093640-040-00 1
Septum: Silicon white / PTFE blue, 1.5 mm, 60° Shore A	18	100	093640-041-00 2
Septum: Butyl red / PTFE grey, 1.6 mm, 55° Shore A	18	100	093640-042-00 3
Septum: Viton black, 1.0 mm, 75° Shore A	18	100	093640-043-00 4
Septum: Natural rubber / TEF; 1.3 mm, 60° Shore A	18	100	093640-100-00 5
Polypropylene white, non-magnetic Septum: Silicone natural / PTFE beige, 3.2 mm; 45° Shore A,	24	100	094210-003-00 6
Polypropylene white, non-magnetic with hole 12.5 mm without Septum	24	100	094210-001-00 7



Septa for screw caps for 10/20 mL screw cap vials

Septum	unit	Part no.
Silicone blue transparent / PTFE white, 1.3 mm, 35° Shore A	100	093640-057-00 1
Silicone white / PTFE blue, 1.5 mm, 60° Shore A	100	093640-056-00 2
Butyl red / PTFE grey, 1.6 mm, 55° Shore A	100	093640-058-00 3
Viton black, 1.0 mm, 75° Shore A	100	093640-059-00 4



Filter inserts 17 µm for 10/20 mL screw cap vials

without vials and screw caps

For:

10 mL screw cap vials 093640-038-00 and

20 mL screw cap vials 093640-036-00

with screw cap 093640-040-00

- 50 units
- 1000 units
- 5000 units

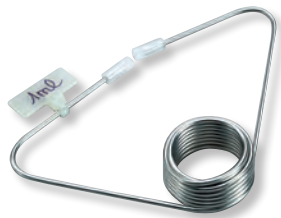
- 020006-050-00
- 020006-100-00
- 020006-500-00





Sample loop

SS Sample loop 1/16" for Cheminert injection valve



2 µL	093731-154-00
5 µL	093731-224-00
10 µL	093731-153-00
20 µL	093731-034-00
25 µL	093731-243-00
50 µL	093731-033-00
100 µL	093731-032-00
250 µL	093731-031-00
500 µL	093731-030-00
1000 µL	093731-107-00
2000 µL	093731-108-00
5000 µL	093731-109-00

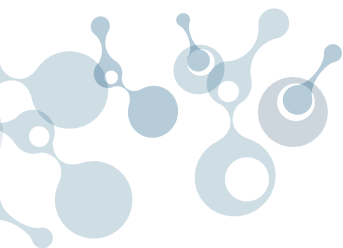
Sulfinert Sample loop 1/16" for Cheminert injection valve

100 µL	093731-123-00
500 µL	093731-124-00
1000 µL	093731-125-00

PEEK Sample loop 1/16" for Cheminert PAEK injection valve



2 µL	093731-158-00
3 µL	093731-265-00
5 µL	093731-157-00
10 µL	093731-156-00
20 µL	093731-155-00
50 µL	093731-184-00



SS Sample loop 1/16" for Valco W-Type injection valve

2 µL	093731-049-00
5 µL	093731-050-00
10 µL	093731-051-00
15 µL	093731-052-00
20 µL	093731-011-00
25 µL	093731-053-00
30 µL	093731-054-00
50 µL	093731-010-00
100 µL	093731-009-00
200 µL	093731-070-00
250 µL	093731-055-00
500 µL	093731-008-00
1000 µL	093731-007-00



SS Sample loop 1/16" for Rheodyne injection valve

5 µL	093731-129-00
10 µL	093731-130-00
20 µL	093731-131-00
50 µL	093731-132-00
100 µL	093731-133-00
500 µL	093731-248-00
1000 µL	093731-249-00

PEEK Sample loop 1/16" for Rheodyne injection valve

5 µL	093731-134-00
10 µL	093731-135-00
20 µL	093731-136-00
50 µL	093731-137-00
100 µL	093731-138-00



MAKING LABS WORK



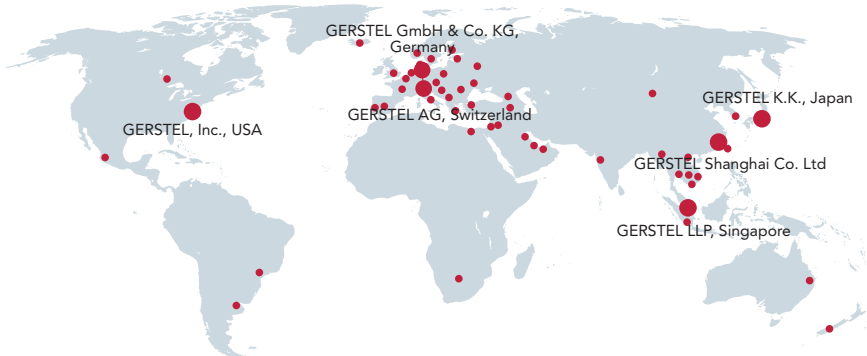
S00135-700-02



MAKING LABS WORK

GERSTEL GmbH & Co. KG
Eberhard-Gerstel-Platz 1
45473 Mülheim an der Ruhr
Germany

www.gerstel.com



Subject to change. GERSTEL®, GRAPHPACK® and TWISTER® are registered trademarks of GERSTEL GmbH & Co. KG. Copyright by GERSTEL GmbH & Co. KG. Agilent® is a registered trademark of Agilent Technologies, Inc.

