



# Olfactory Detector Port ODP 2

Olfactory detection and recording for gas chromatography



**New!**  
Now with voice  
recordin

## GERSTEL Olfactory Detector Port ODP 2

### *Simultaneous detection of compounds by the human nose and a mass spectrometer*

The ODP 2 allows the sensing of compounds by the human nose as they elute from the column of a gas chromatograph. The entire effluent can be presented to the nose as it leaves the column or it can be split so that it arrives simultaneously at the nose and a mass spectrometer or any another detector.

The ODP 2 can be installed on most gas chromatographs. It consists of a flexible, heated, height adjustable transfer line, with replaceable nose cone and a humidification system. These features provide optimum comfort while performing olfactory analysis, allowing analysts to concentrate on the task at hand, not how fatigued they are.



### Research and problem solving for:

**Fragrances**

**Flavors**

**Food**

**Beverages**

**Pharmaceuticals**

**Plastics and Packaging**

**Consumer Products**

**Environmental Analysis**

**Chemicals**

**Waste Disposal Management**



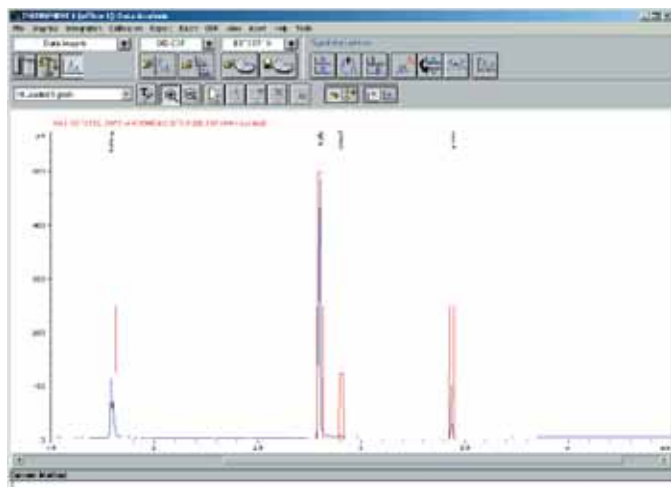
### Simultaneous detection

A GRAPHPACK precision-engineered crosspiece ensures zero dead volume, leak free operation when used with vacuum and exposed to many temperature cycles. This "closed splitter" allows simultaneous detection of compounds at the nose and up to two other detectors. Atmospheric, vacuum and high pressure detectors can all be used with this technology.





**GERSTEL**



*Overlay of chromatogram and "olfactogram" annotated with voice-recorded comments*



## GERSTEL ODP Recorder

### 1. GERSTEL ODP Recorder Software

The GERSTEL ODP Recorder Software is completely integrated into the Agilent GC or MS ChemStation. It permits identification of components by superimposing the olfactogram with the GC or MS chromatograms.



*Voice comments are stored as ".WAV" files that are converted to text. Comments can be replayed at any time and text can be edited.*

### 2. GERSTEL Olfactory Pad - OP

The GERSTEL Olfactory Pad allows the analyst to record an "olfactory event" by simply pressing one of 4 buttons. Each button corresponds to a different odor intensity level. The resulting "olfactogram" with voice comments are associated with and saved in the same file as the GC or MS chromatogram. The olfactory pad is connected via the computer's USB port so no auxiliary detector boards are needed.



GERSTEL OP

### 3. Voice Recording

Spoken comments are converted into text using Dragon NaturallySpeaking software. Small, space saving ".WAV" files allow voice to text processing to occur after the chromatographic run is completed. This conserves computer resources and provides a permanent record of voice comments that can be replayed if there is ever any confusion about voice to text conversion.



GERSTEL

## GERSTEL ODP Advantages

Recording of an olfactogram with 4 discrete levels of intensity in combination with:

- |  |   |
|--|---|
| <p>1 ▶ Ergonomic design</p> <p>2 ▶ Simultaneous detection</p> <p>3 ▶ Odor descriptors recorded by simply speaking</p> <p>4 ▶ Complete data recording</p> | <p>▶ Maximum comfort during long analyses</p> <p>▶ A single compound can be detected by the nose and up to two other detectors (MS, NPD, AED, etc.)</p> <p>▶ Permits full attention to be paid to detecting and describing odors</p> <p>▶ Chromatogram, "olfactogram", voice comment annotation, and olfactory event times are saved in a single file and can be printed out in a single report</p> |
| <p>5 ▶ Simple to use</p>   | <p>▶ The combination of speaking and pressing only 4 buttons permits „eyes closed“ operation</p>  |



*Ask us how GERSTEL technology can benefit you!*

### System requirements:

- Agilent GC ChemStation Version A08.XX  
MS ChemStation G 1701 DA
- Intel® Pentium® / 1 GHz processor (for example Pentium® M, Pentium® 4 or equivalent AMD® processor – Faster processors will yield faster performance)
- min. 512 MB RAM
- 1 GB free hard disk space
- Microsoft® Windows® XP (SP1 or higher), 2000 (SP4 or higher)
- Creative® Labs Sound Blaster® 16 or equivalent sound card supporting 16-bit recording



For detailed information on other GERSTEL products and systems as well as a complete list of available publications, please visit our web page at [www.gerstel.com](http://www.gerstel.com)



Information, descriptions and specifications in this publication are subject to change without notice.  
GERSTEL, GRAPHPACK and TWISTER are registered trademarks of GERSTEL GmbH & Co. KG.  
© Copyright by GERSTEL GmbH & Co. KG

 **Agilent Technologies**  
Premier Solution Partner